

Voice Communication for Free

▶ IP1000

High Performance Embedded VoIP Gateway



IP1000 High Performance Embedded

Functional Description

Inheriting DSG proud tradition of technological innovation, IP1000 is built to possess many sensible features. The modularized FXO/FXS dual telephone interface provides the system with an ultra flexible PSTN connection. IP1000 can conveniently connect to either the trunk or the extension of a PBX, or a mix of both. Direct connections from C.O. lines or analog telephone sets can also be done by IP1000.

In addition, the state-of-the-art design provides users of IP1000 two usage modes - **VPN** mode and **ITSP** mode.

In **VPN** mode, IP1000 constructs a point-to-point communication structure in a Private Network or a Virtual Private Network and functions perfectly in any TCP/IP environment. Also, with a specially designed user-definable dial plan function, IP1000 delivers an optimized user-friendly interface while satisfying the unique dialing habits of each IP1000 user. This enables decentralized enterprises to make phone calls to branches easily and efficiently. With an IP1000 installed in the office, even overseas calls will sound and cost similar to those between internal extensions.

In **ITSP** mode, IP1000 works as a multi-ports Internet-phone or box, allowing it to reach or be reached directly by all DSG VoIP devices, dial-up (**IPStar**) and Ethernet-based (**InterStar** and **InterPhone**). Supported by DSG global VoIP network, IP1000 also offers the benefits provided by a gatekeeper and billing system. Moreover, connecting to the legacy PSTN with just a single IP1000 is also supported.

System Description

A high performance industry standard-compliant gateway optimized for VoIP and IP-PBX applications, IP1000 is the latest addition to DSG's Internet Telephony products. IP1000 is equipped with a RJ-45 female connector interface to the IEEE 802.3 10BaseT Ethernet. With up to 8 analog ports and supports both FXO and FXS telephone interface, IP1000 is more than a reliable and affordable long distance saving phone system, it is the ideal telephony mate for small to medium size enterprises.

VoIP Gateway

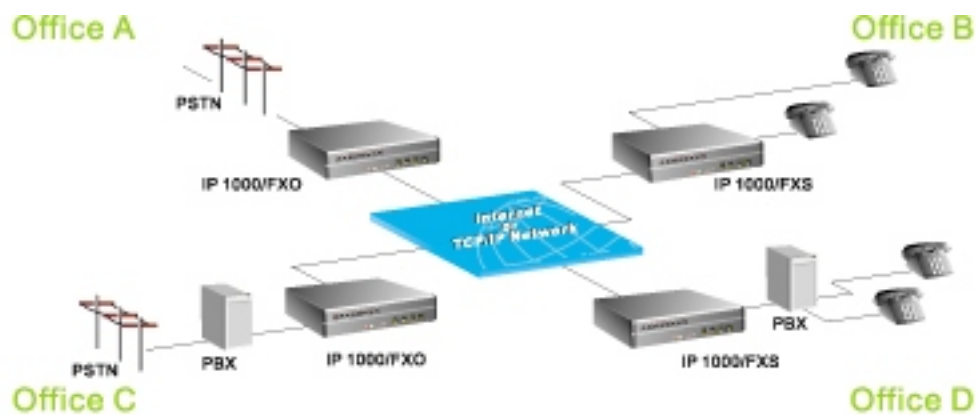
Benefits

- Superb Carrier-Class Voice Quality
- Complete End-to-End VoIP Solutions
- Dual FXO/FXS Interface
- Convenient ITSP/VPN Mode Access
- Flexible User-Definable Dial Plan
- Reliability, Scalability, and Remote Access Function

Features

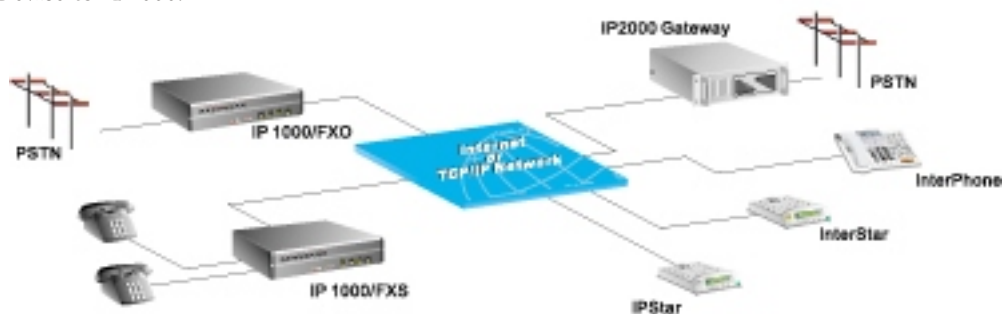
VPN Mode

As a multi-port VoIP gateway, IP1000 functions as a bridge between the call initiator and receiver. This enables users of IP1000 to connect under the following modes: IP1000-to-IP1000, IP1000-to-Phone, Phone-to-IP1000, Phone-to-Phone, IP1000-to-PBX and PBX-to-IP1000.

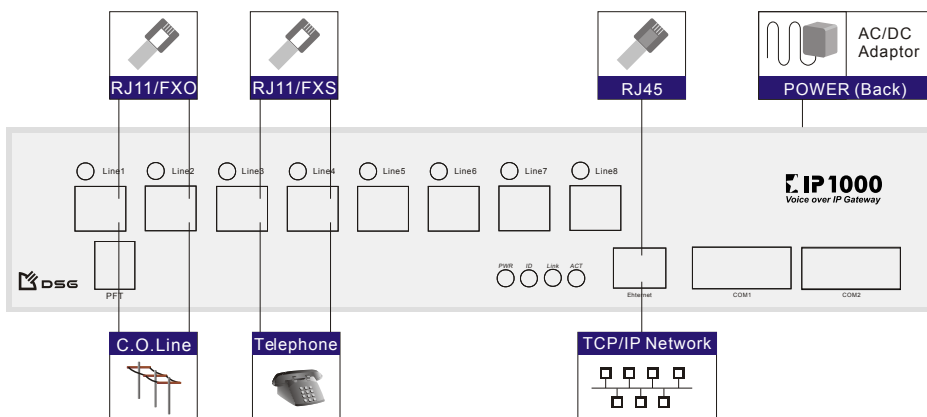


ITSP Mode

Each DSG VoIP products owns an unique ID number. Simply dial the ID of receiving device and one will be connected to other on-line DSG VoIP product users automatically. This enables IP1000 to perform under these modes: IP1000-to-Phone, Phone-to-IP1000, IP1000-to-DSG Device, DSG Device-to-IP1000.



Specifications



Dimensions

315mm x 198mm x 60mm

Weight

Approximately 2300g

Power Input

DC5V, 12V

Temperature

0° ~ 50°C (32° ~ 122°F)

Humidity

10% ~ 90% non-condensing

Internal RAM

2MB/4MB

Flash Memory

4Mbits/ 8Mbits

Voice Compression

G.723.1 standard, G.711, G729a Optional

Telephone Interface

FXO/FXS ,RJ11

Network Interface

Ethernet 10BaseT, RJ 45

Network Protocol

TCP/IP, DHCP, Telnet

For more information, visit our Web site today at

www.dsgtechnology.com

Corporate Headquarters

11F, 97 Song Ren Road

Taipei, Taiwan

Tel:886-2-87892020

Fax:886-2-87805511

E-Mail:sales@dsg.com.tw

DSG Technology USA

20265 Valley Blvd., # N

Walnut, CA 91789

Tel:1-909-5958908

Fax:1-909-5955508

E-Mail:sales_na@dsgtechnology.com